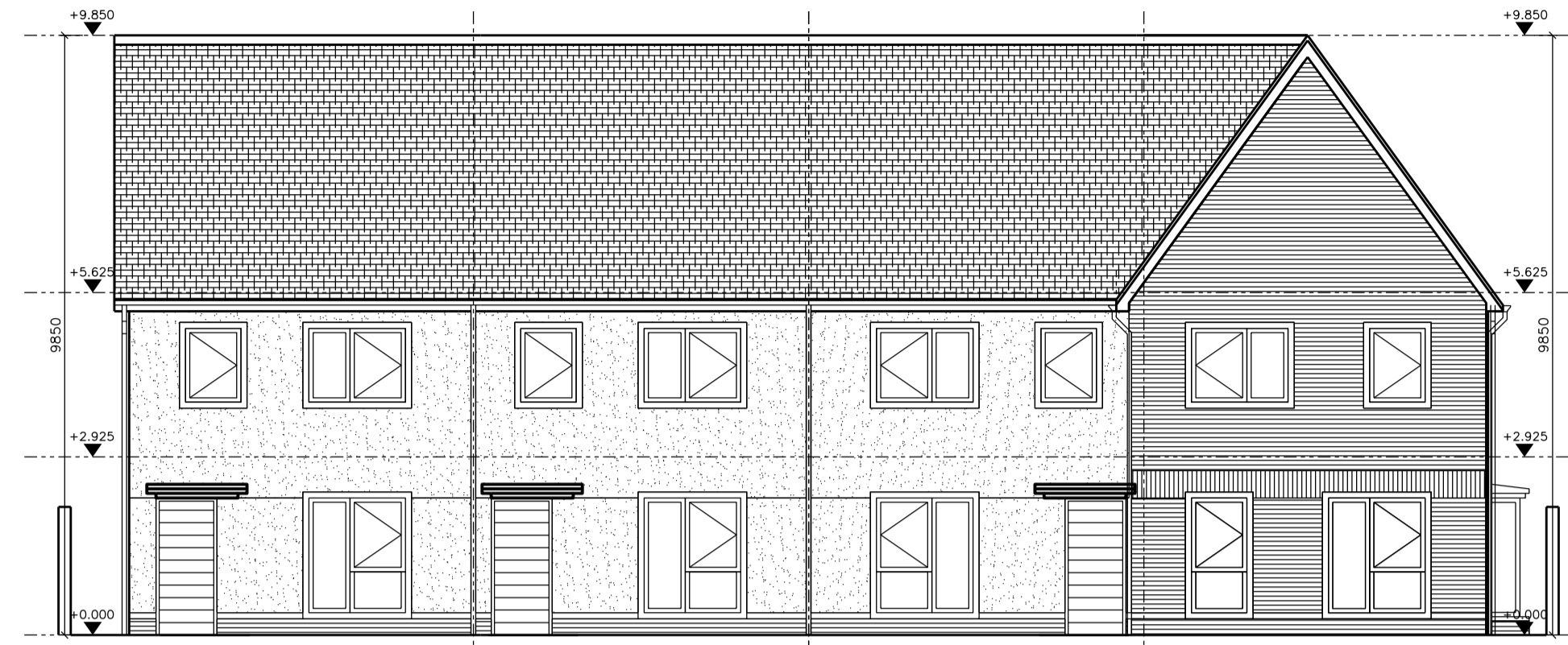


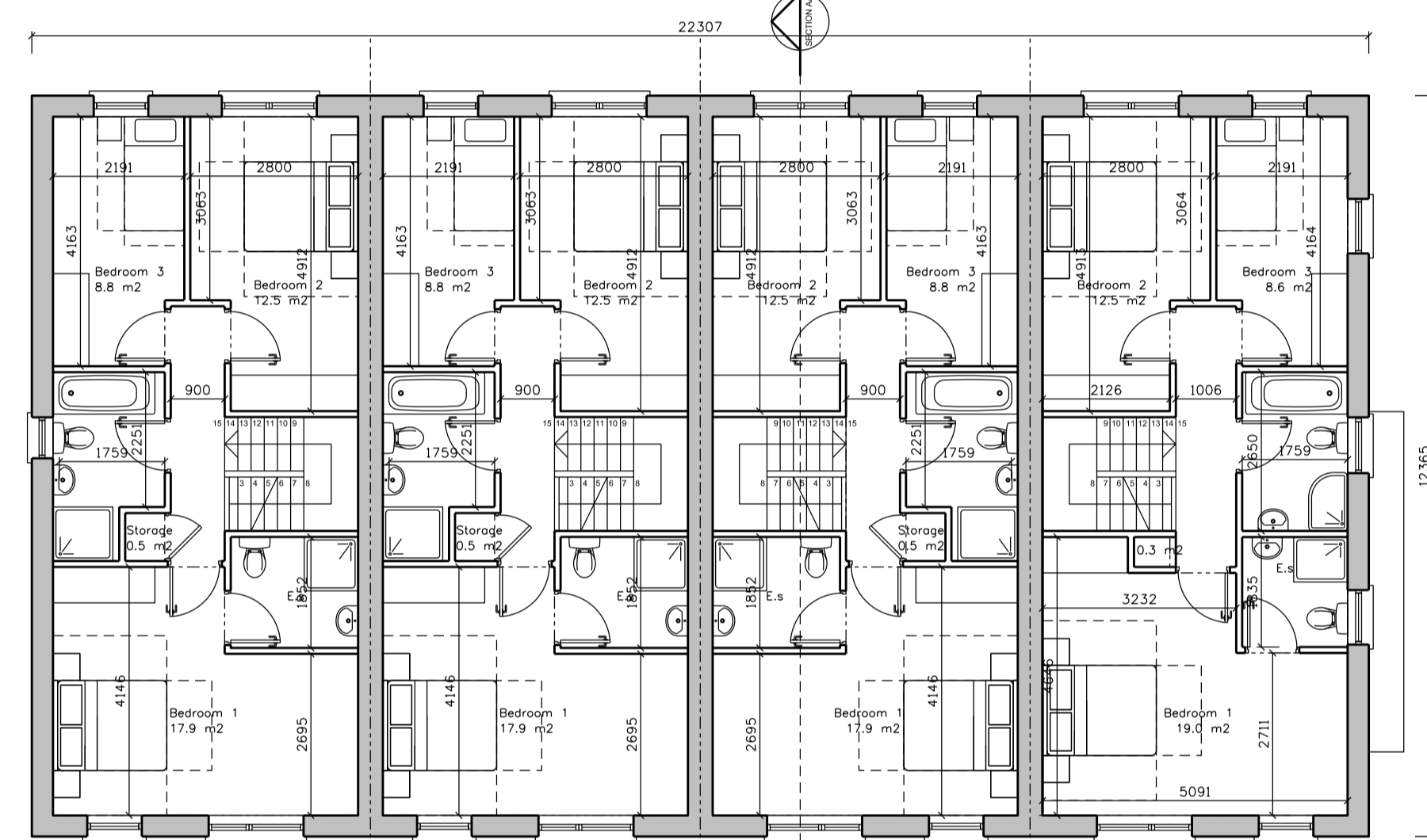
Roof Plan



Front Elevation



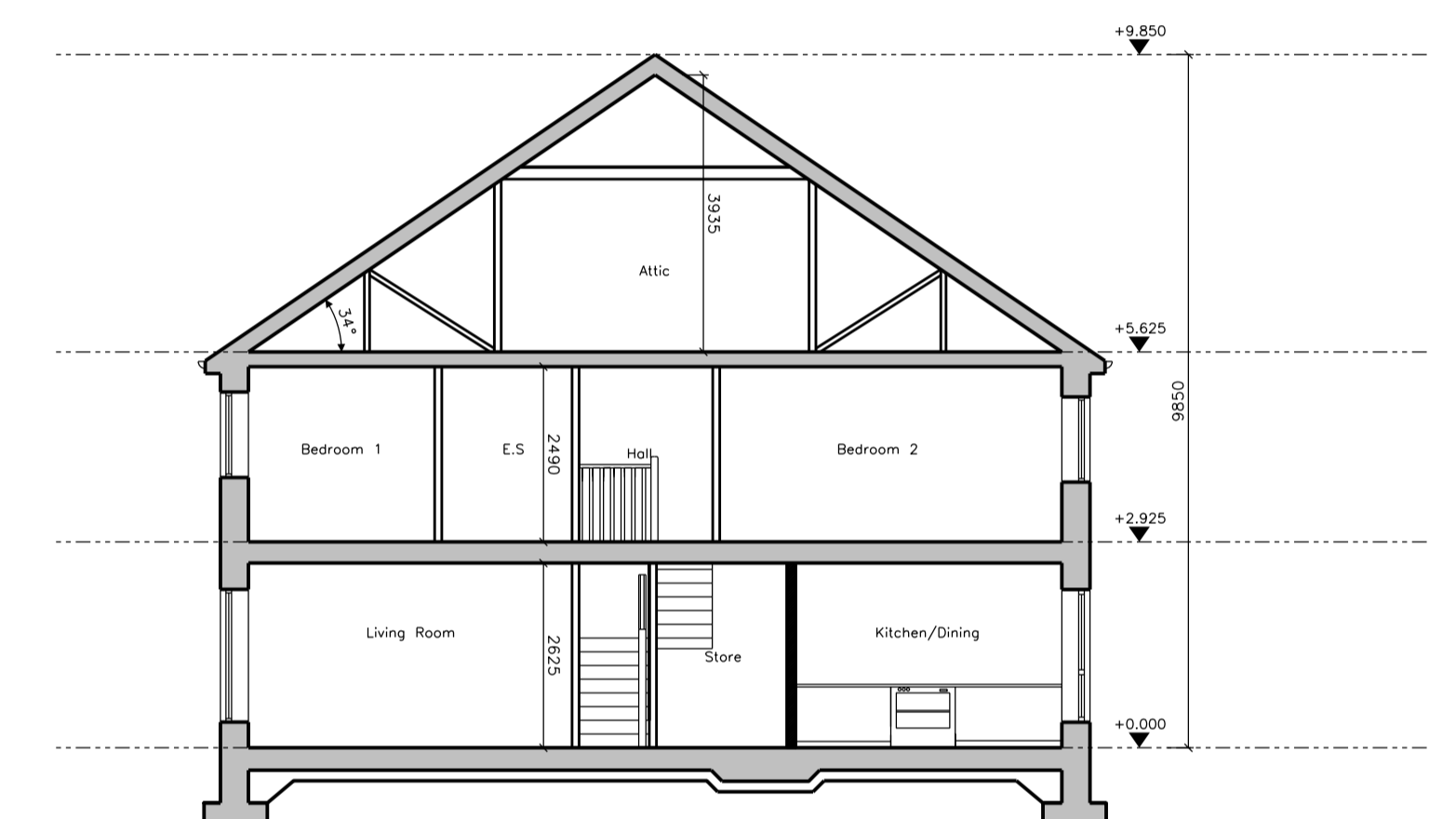
Side Elevation 1



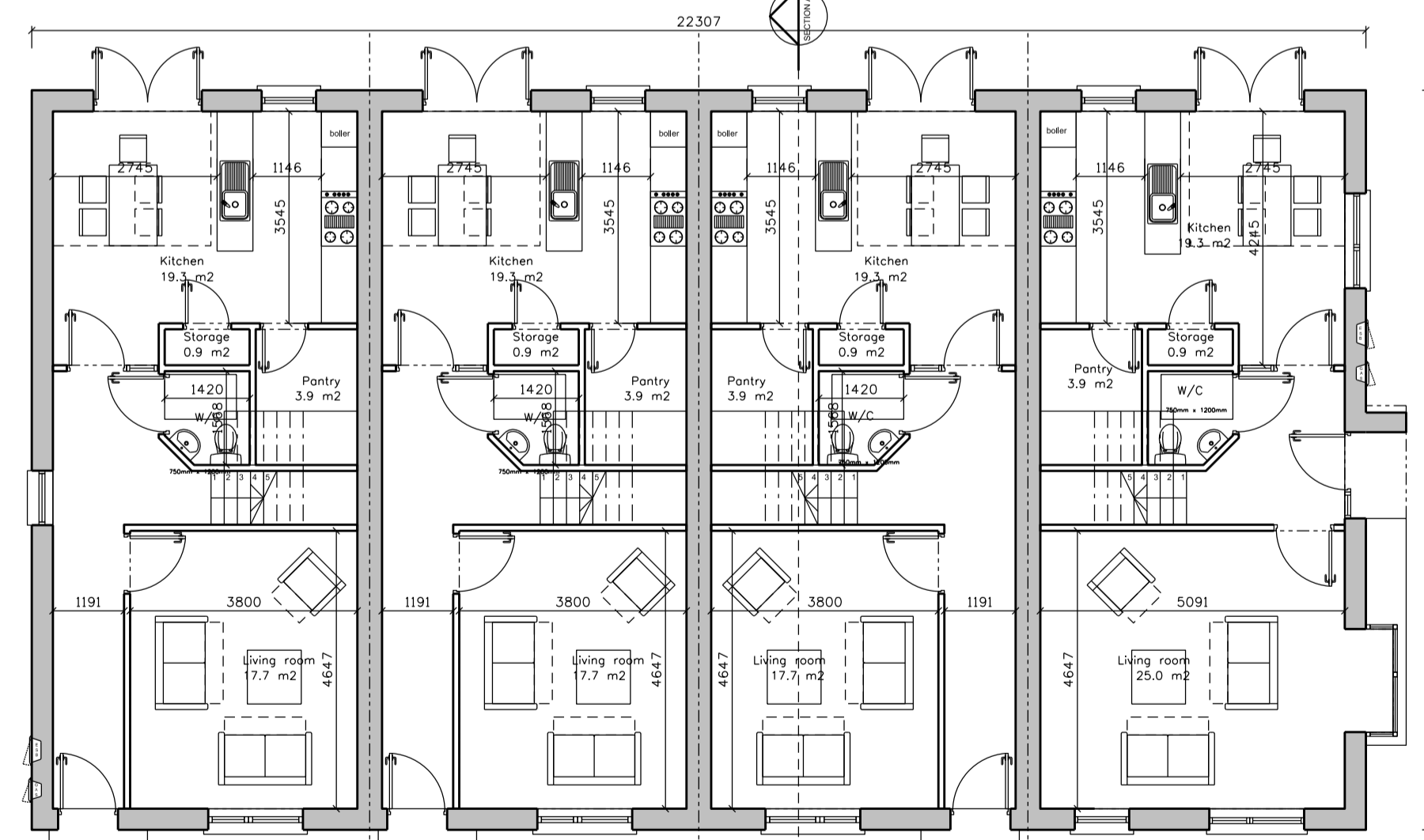
First Floor Plan



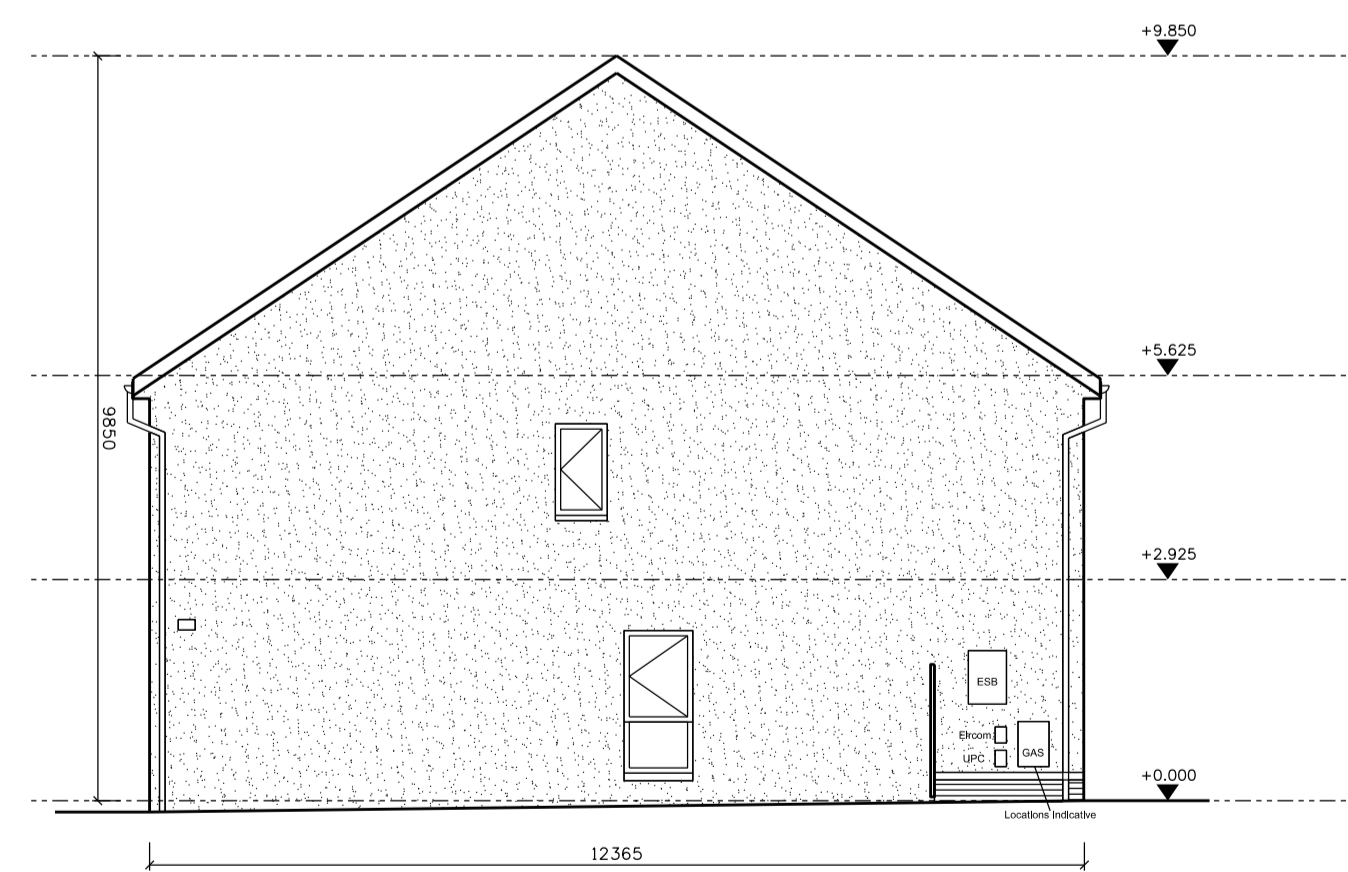
Rear Elevation



Section A-A

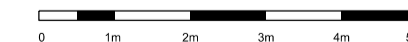


Ground Floor Plan



Side Elevation 2

| Type B1    |                      | Type B2    |                      |
|------------|----------------------|------------|----------------------|
| 3B 5P SEMI |                      | 3B 5P SEMI |                      |
| - Ground   | 60.6 m <sup>2</sup>  | - Ground   | 59.4 m <sup>2</sup>  |
| - First    | 59.4 m <sup>2</sup>  | - First    | 59.4 m <sup>2</sup>  |
| - Total    | 120.0 m <sup>2</sup> | - Total    | 118.8 m <sup>2</sup> |
| Cook/Dine  | 19.3 m <sup>2</sup>  | Cook/Dine  | 19.3 m <sup>2</sup>  |
| Living     | 24.9 m <sup>2</sup>  | Living     | 17.7 m <sup>2</sup>  |
| Storage    | 5.1 m <sup>2</sup>   | Storage    | 5.1 m <sup>2</sup>   |
| Agg Bed    | 40.1 m <sup>2</sup>  | Agg Bed    | 40.1 m <sup>2</sup>  |
| Agg Live   | 44.5 m <sup>2</sup>  | Agg Live   | 37.0 m <sup>2</sup>  |



NOTE:  
REFER TO PROPOSED SITE LAYOUT PLANS  
FOR BUILDING LEVELS AND ORIENTATION

| Revision | Date     | Description                    | By | Check | Client logo |
|----------|----------|--------------------------------|----|-------|-------------|
| A        | 27.08.19 | ABP Planning Application Issue | ML | BG    |             |



**Notes**  
Do not scale drawings. All dimensions should be checked on site. Errors to be reported to architect. To be read in conjunction with all relevant architects services and engineers drawings.  
Contractors, sub-contractors and suppliers must verify any critical dimensions on site prior to fabrication of any building element. Any discrepancies are to be reported to the architect.  
This drawing should be read in conjunction with all relevant specifications, engineers and specialist's consultants information. Any discrepancies must be reported prior to installation.

**Key**  
NOTES ON FINISHES:  
ROOF: To be finished in clay or concrete roof tiles in selected colour or similar approved.  
WALLS: Selected clay brickwork where indicated otherwise selected self coloured render.  
Exposed surfaces to window openings and bands to be recessed and stone or selected render.  
JOINERY: All windows and doors, frames and linings, to be aluminium powder coated to approved colour or uPVC.  
RAINWATER GOODS: Gutters, downpipes, and flashings to be zinc or aluminium powder coated to selected colour.  
CANOPES: Metal clad canopy to selected colour.  
SERVICE METERS: Location of meters shown to indicate.  
SOLAR PANELS: Indicate position shown, but position will depend on house orientation.

**Metropolitan Workshop**  
14-16 Covercross Street,  
London, EC1M6DG  
+44 (0) 20 7566 0450  
www.metnetwork.co.uk

|           |   |
|-----------|---|
| Project:  | Farrankelly                                   |
| Client:   | Caim Homes Properties Ltd                     |
| Location: | Farrankelly, Greystones, Delgany, Co. Wicklow |
| Title:    | Terrace - B1/B2/B2/B2                         |
| Date:     | 27 August 2019                                |
| Scale:    | 1:100 @ A1                                    |

| Drawing Number: | Job No. | Status | Package | Reference | Revision |
|-----------------|---------|--------|---------|-----------|----------|
| 1609            | A       | 101    | 029     | A         |          |